

Perfect Union

EDYTA SITAR OF LAUNDRY BASKET QUILTS



100
years



Flower Wall Quilt designed by: **Edyta Sitar** • Quilt Size: **60" x 60"**

Skill Level: **Intermediate** • andoverfabrics.com

andover • makower.uk

Free Pattern Download Available

1384 Broadway New York, NY 10018
Tel. (800) 223-5678 • andoverfabrics.com

Flower Wall



Featuring Andover Fabrics new Collection: Perfect Union and by Edyta Sitar
 Quilt designed by Edyta Sitar of Laundry Basket Quilts

Quilt finished 60" x 60"

Cutting Directions

Note: Read assembly directions before cutting patches. Borders are cut to exact length required plus 1/4" seam allowance. WOF designates the width of fabric from selvedge to selvedge (approximately 42" wide).

Fabric A First divide the 2 1/2" strip packs into lights and darks, then match like prints together. You will need (4) matching strips for each round.

LIGHTS

- Round 1: (2) 2 1/2" x 4 1/2" strips
 (2) 2 1/2" x 8 1/2" strips
- Round 3: (4) 2 1/2" x 10" strips
- Round 5: (4) 2 1/2" x 10" strips
- Round 7: (4) 2 1/2" x 11" strips
- Round 9: (4) 2 1/2" x 12" strips
- Round 11: (4) 2 1/2" x 14" strips
- Round 13: (4) 2 1/2" x 16" strips
- Round 15: (4) 2 1/2" x 17 1/2" strips
- Round 17: (4) 2 1/2" x 19 1/2" strips
- Round 19: (4) 2 1/2" x 21" strips
- Round 21: (4) 2 1/2" x 22 1/2" strips
- Round 23: (4) 2 1/2" x 25" strips
- Round 25: (4) 2 1/2" x 26" strips
- Round 27: (4) 2 1/2" x 28" strips

DARKS

- Round 2: (4) 2 1/2" x 9 1/2" strips
- Round 4: (4) 2 1/2" x 10" strips
- Round 6: (4) 2 1/2" x 10" strips
- Round 8: (4) 2 1/2" x 11" strips
- Round 10: (4) 2 1/2" x 13" strips
- Round 12: (4) 2 1/2" x 15" strips
- Round 14: (4) 2 1/2" x 16" strips
- Round 16: (4) 2 1/2" x 18" strips
- Round 18: (4) 2 1/2" x 20" strips
- Round 20: (4) 2 1/2" x 21 1/2" strips
- Round 22: (4) 2 1/2" x 23 1/2" strips
- Round 24: (4) 2 1/2" x 25" strips
- Round 26: (4) 2 1/2" x 27" strips
- Round 28: (4) 2 1/2" x 28" strips
- Round 29: (4) 2 1/2" x 25 1/2" strips
- Round 30: (4) 2 1/2" x 20 1/2" strips

Fabric Requirements

Fabric A	2 1/2" Strips	Yardage	Fabric
Fabric B	Center, Corners	4 packs 5/8 yard	2S-PERFECT-X 9577-B
Binding		2/3 yard	9582-B
Backing		4 yards	9577-BL

Fabric B Cut (1) 4 1/2" square.
 Cut (2) 11 1/2" squares. Cut the squares across one diagonal to make (4) 11 1/2" triangles.

Binding Cut (7) 2 1/2" X WOF strips.

Backing Cut (2) 68" x WOF strips. Sew the strips together and trim to make (1) 68" x 68" backing.

Making the Quilt

- Round 1:** Sew (1) 2 1/2" x 4 1/2" A1-Light Strip to each side of the 4 1/2" Fabric B square. Sew (1) 2 1/2" x 8 1/2" A1-Light Strip to the top and bottom of the Fabric B square to make (1) Unit 1 square (Diagram 1).

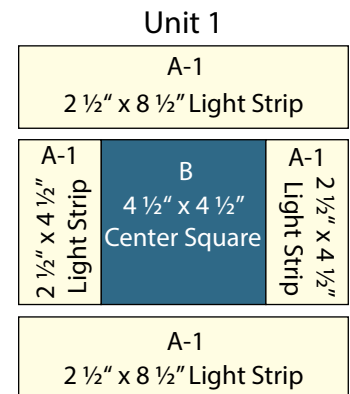


Diagram 1

- Place a quilting ruler with a 45-degree line on top of the Unit 1 square, aligning the 45-degree line with the left edge of the unit and the 1/4" line aligned with the upper left corner of the Fabric B Center Square. Trim the Unit 1 corner as shown in Diagram 2.

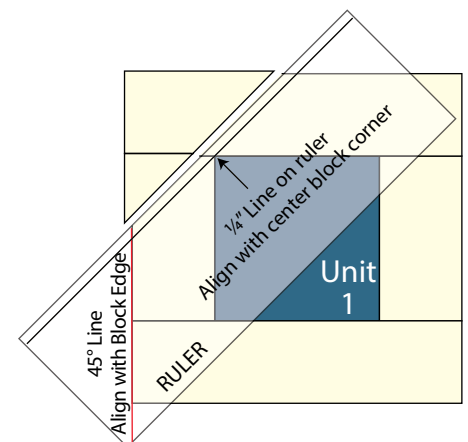


Diagram 2

Flower Wall

3. Repeat with the remaining three corners of the Unit 1 square to make the Unit 2 block (Diagram 3).

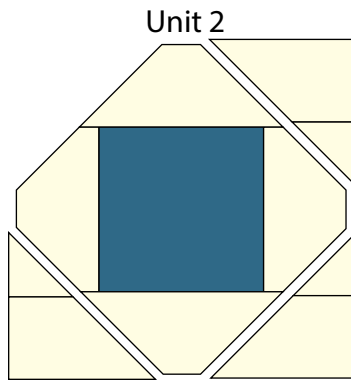


Diagram 3

4. **Round 2:** Center and sew (1) $2\frac{1}{2}$ " x $9\frac{1}{2}$ " A2-Dark Strip to opposite sides of the Unit 2 block (Diagram 4). Use a quilting ruler to trim the newly sewn strips even with the Unit 2 block sides (Diagram 5).

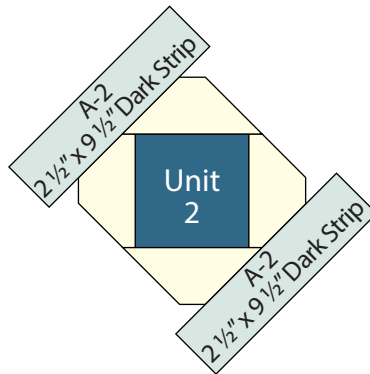


Diagram 4

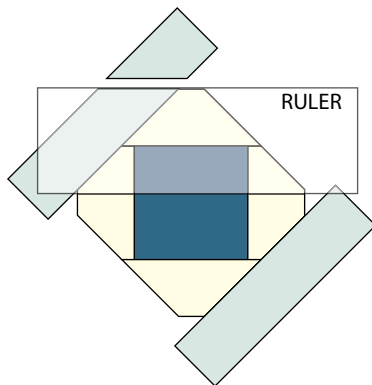


Diagram 5

5. Center and sew (2) $2\frac{1}{2}$ " x $9\frac{1}{2}$ " A2-Dark Strips to the remaining two sides of the Unit 2 block (Diagram 6).

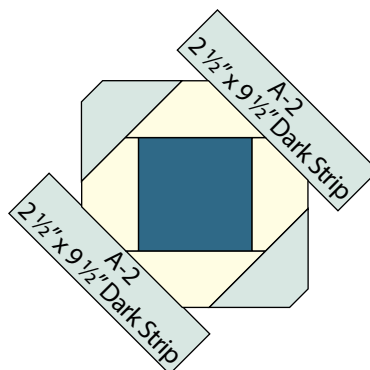


Diagram 6

6. Trim the remaining (2) strips even with the Unit 2 block to make the Unit 3 block (Diagram 7).

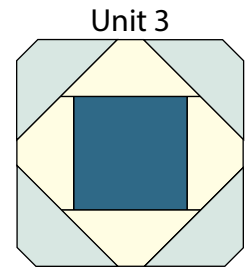


Diagram 7

7. **Round 3:** Center and sew (1) $2\frac{1}{2}$ " x 10" A3-Light Strip to each side of the Unit 3 block (Diagram 8). Trim the strips even with the Unit 3 block.

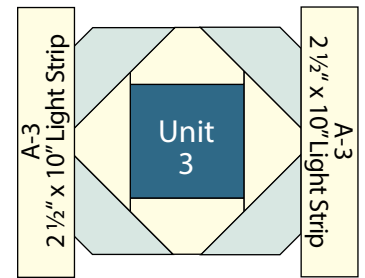


Diagram 8

8. Center and sew (1) $2\frac{1}{2}$ " x 10" A3-Light Strip to each of the remaining sides of the Unit 3 block (Diagram 9). Trim the strips even with the Unit 3 block to make the Unit 4 block (Diagram 10).

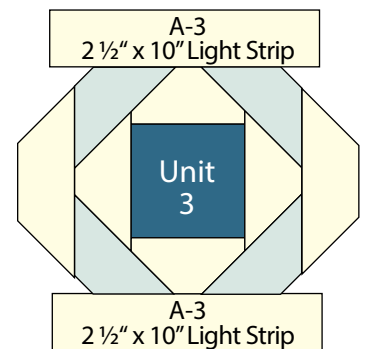


Diagram 9

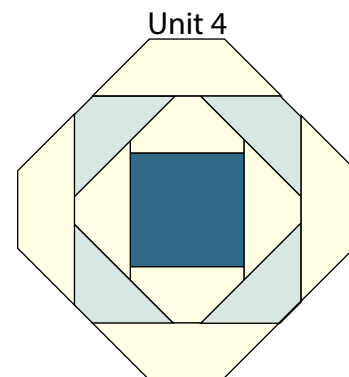


Diagram 10

Flower Wall

9. Repeat Steps 4-8 and follow Diagram 11 to add Rounds 4-27 to the Unit 4 block.
10. For Rounds 28-30, center and sew the strips to each corner without trimming. After these three rounds are attached, trim the quilt top to measure $60\frac{1}{2}'' \times 60\frac{1}{2}''$.
11. Sew (1) Fabric B triangle to each corner of the quilt to complete the quilt top.

Finishing the Quilt

12. Layer and quilt as desired.
13. Sew the (7) binding strips together, end to end with a 45-degree seams, to make the binding. Fold this long strip in half lengthwise with wrong sides together and press.
14. Bind as desired.

Trim the outer three Light Blue strips even with the last Cream strip
AFTER attaching **ALL** three strips to each corner

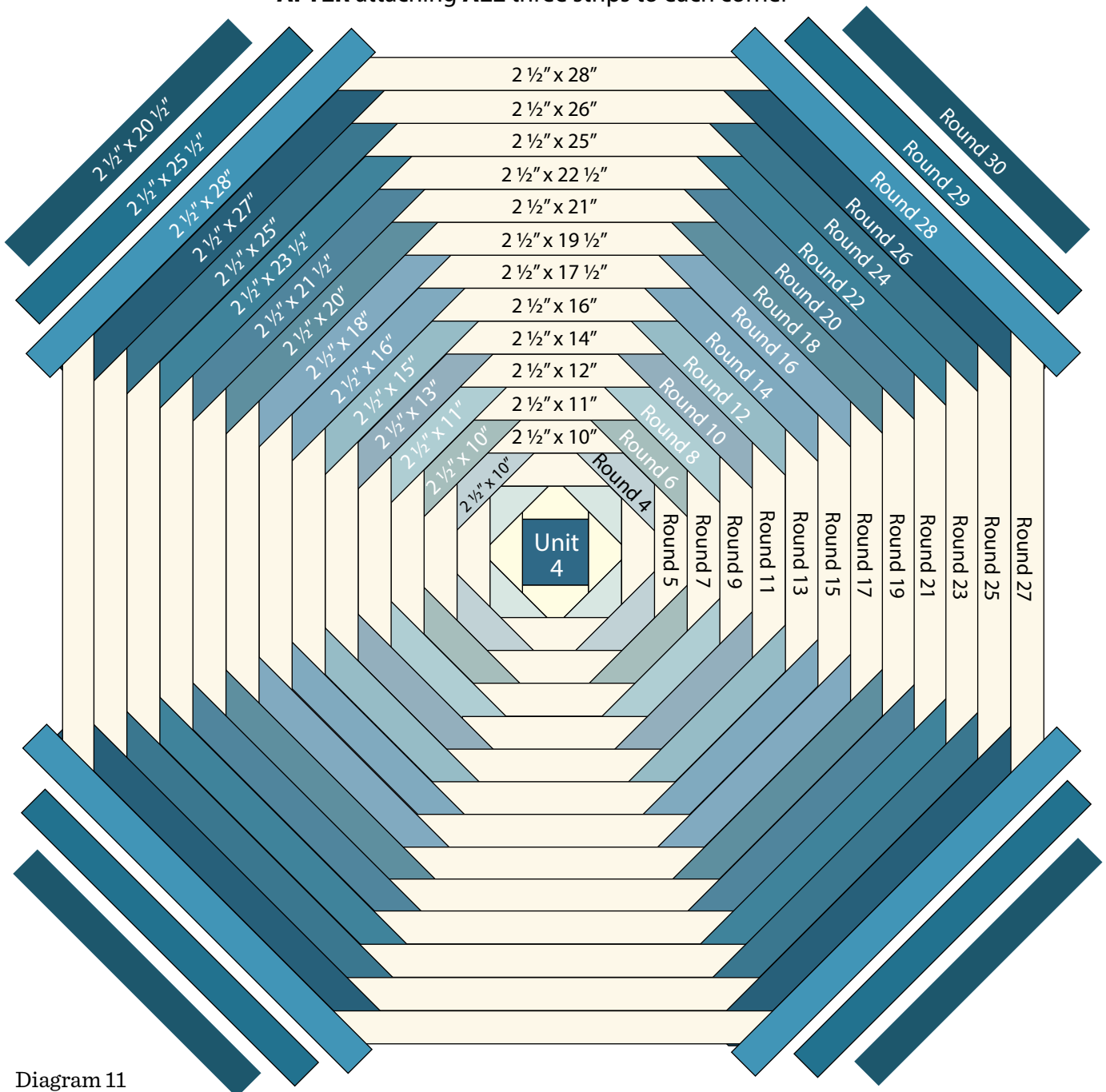
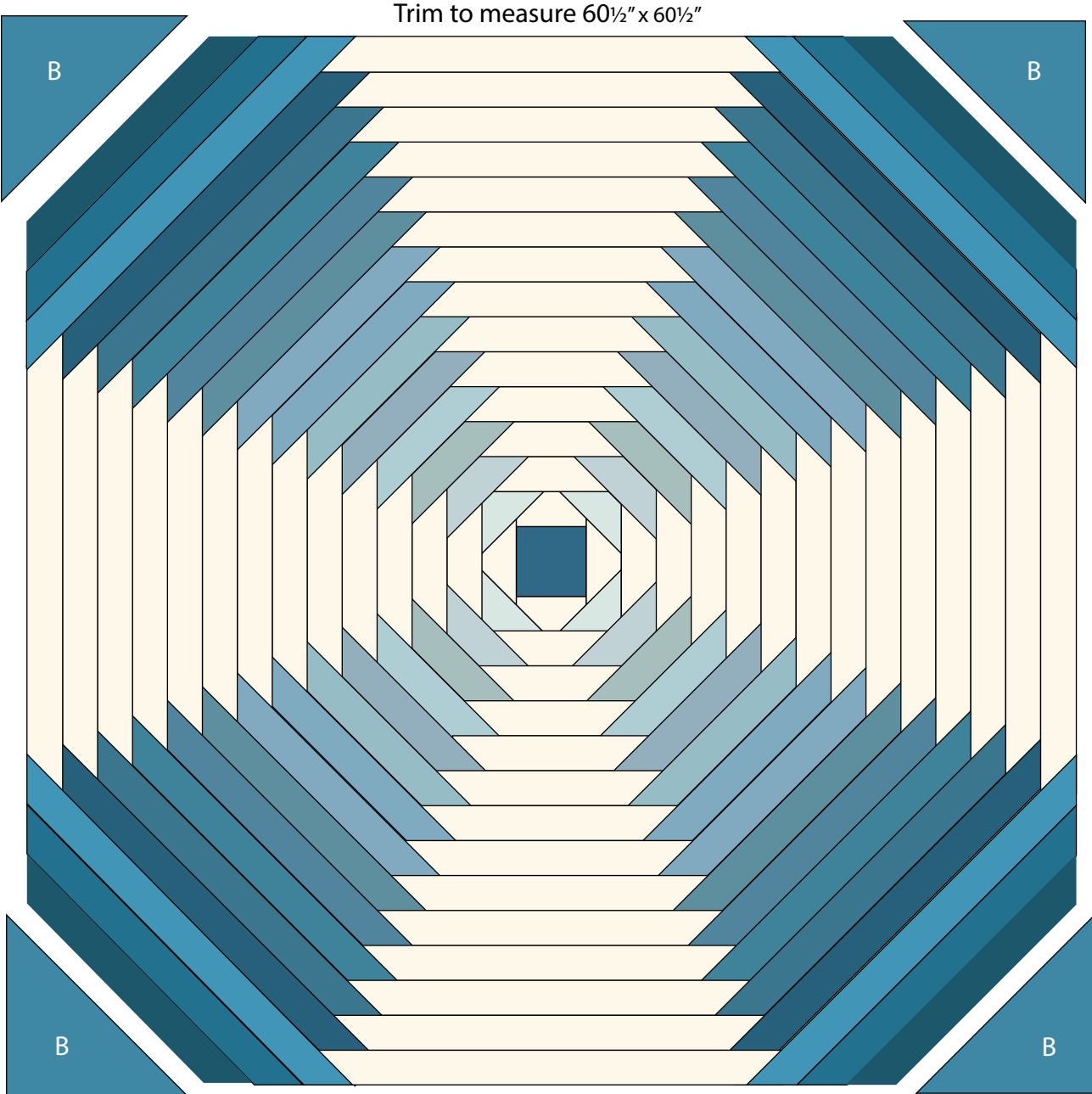


Diagram 11

Flower Wall



Quilt Layout

Perfect Union

EDYTA SITAR OF LAUNDRY BASKET QUILTS



Note: Pattern uses 4 packs of 2 1/2" strips from the Perfect Union collection plus additional yardages listed below.



9577-B 5/8 yd



9577-BL 4 yds
(includes backing)



9577-L



9578-B



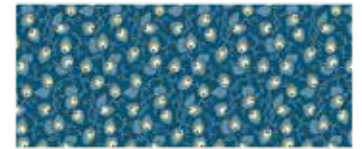
9579-B



9580-B



9581-B



9582-B 2/3 yd
(includes binding)



9583-B



9584-B



9585-B



9586-B



9587-B



9588-B



9589-B



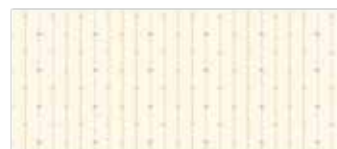
9589-BL



9590-B



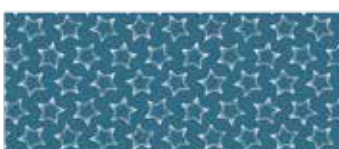
9591-B



9591-BL



9592-BL



9593-B



9593-BL



9594-B



9594-BL



9594-L



9595-B

About Our Fabrics

A recognized leader in the quilting industry, Andover Fabrics features designs by a wide variety of talented artists and licenses, including Downton Abbey and Eric Carle's Very Hungry Caterpillar. Catering to the tastes of creative and dedicated quilters, Andover has a style for everyone — authentic reproductions, romantic florals, modern and more.

Fabrics shown are 25% of actual size.

andover • makower.uk

Free Pattern Download Available

1384 Broadway New York, NY 10018
Tel. (800) 223-5678 • andoverfabrics.com